

# The fall of data portals and the future of data workflows



# Simão Belchior

Product Developer\*

@belchior

[simao@vizzuality.com](mailto:simao@vizzuality.com)

\*since Today :)



# Yosemite National Park World Heritage Site

Parc national de Yosemite, [United States](#)

Information

Discussion

Species

hide markers

TERRAIN

SATELLITE



feedback

POWERED BY Google expand



All Photos are provided by Panoramio. Photos are under the copyright of their owners.

1 2 3

## Description

## Official Record

100% COMPLETE

WDPA ID  
10908

NAME  
Yosemite National Park

ORIGINAL NAME  
Parc national de Yosemite

COUNTRY / TERRITORY  
USA

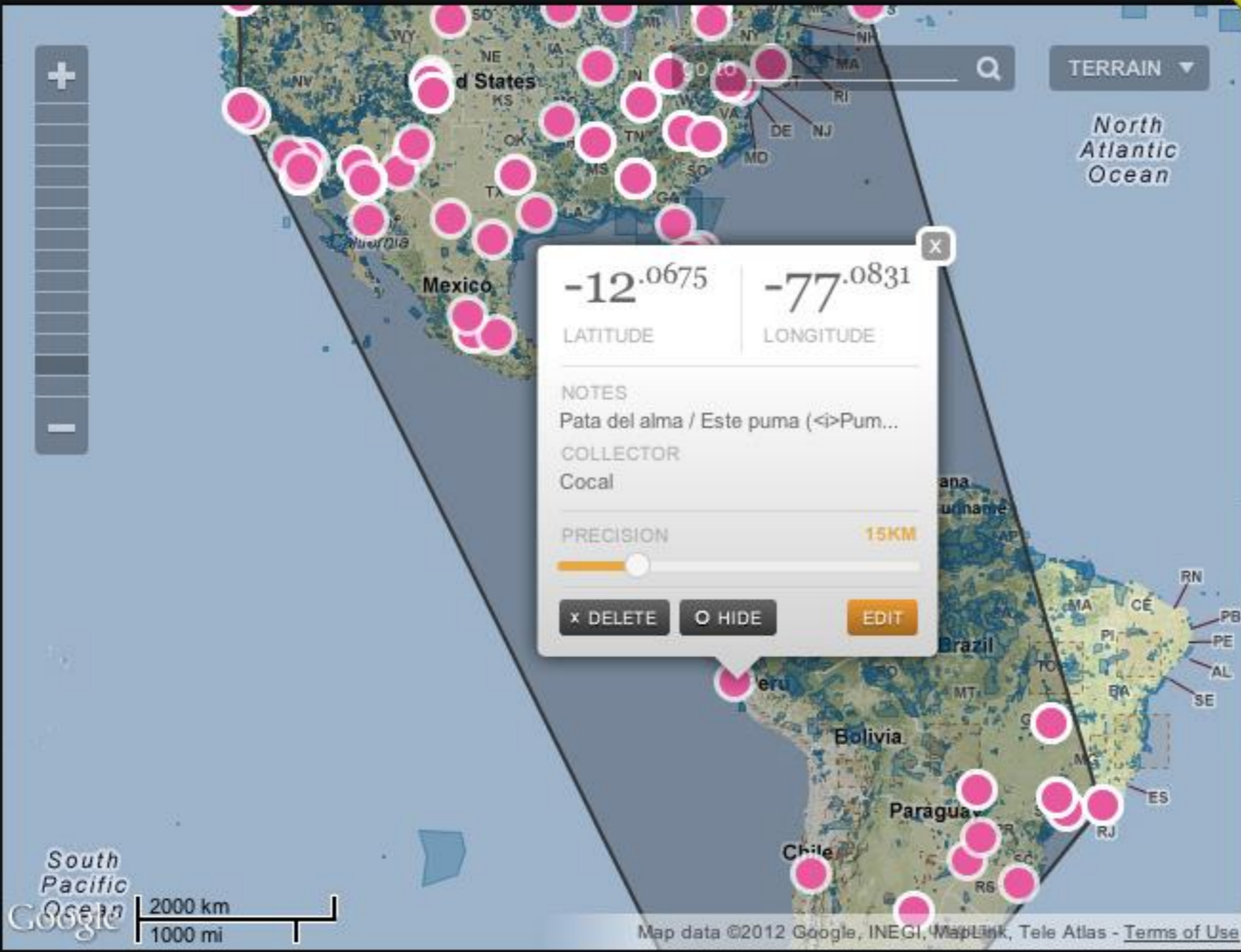
SUB LOCATION  
Not Reported

Untitled report (unsaved)

Help Close tool

TOOLS

Navigation and tool icons including a vertical zoom slider, a search icon, a pan icon, a zoom in (+) button, a zoom out (-) button, a refresh icon, and a support button.



BETA VERSION

ANALYSIS AND SOURCES

Enables EOO/AOO

Extent of Occurrence **54,114,043.59 km<sup>2</sup>** **LC**

Area of Occupancy **324.00 km<sup>2</sup>** **EN**

AOO based on user defined cell width (2 km), [change](#)

Print complete report

1 DATA SOURCES

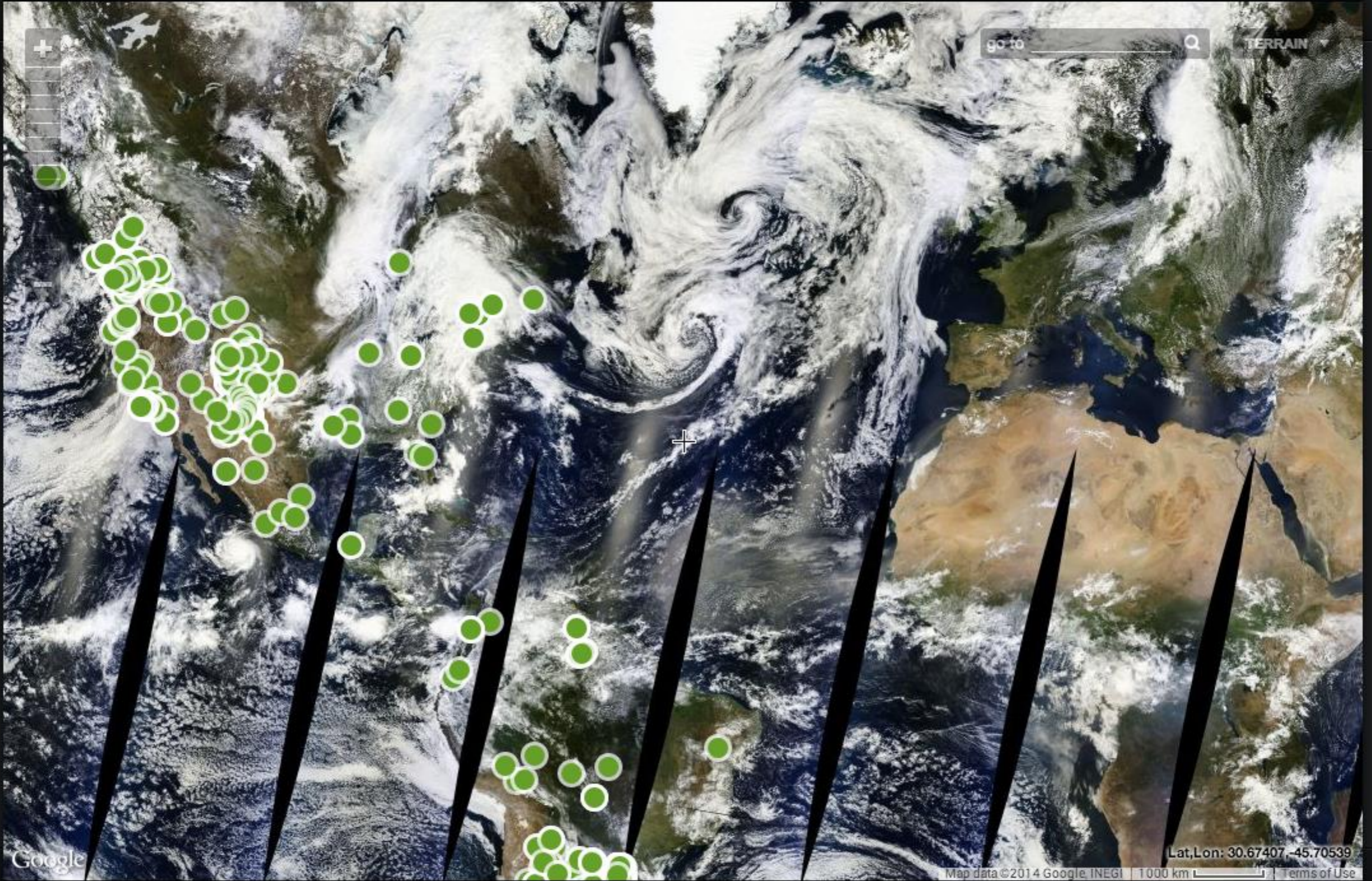
**Puma concolor** 198 Flickr points

Add a new source

Add source +

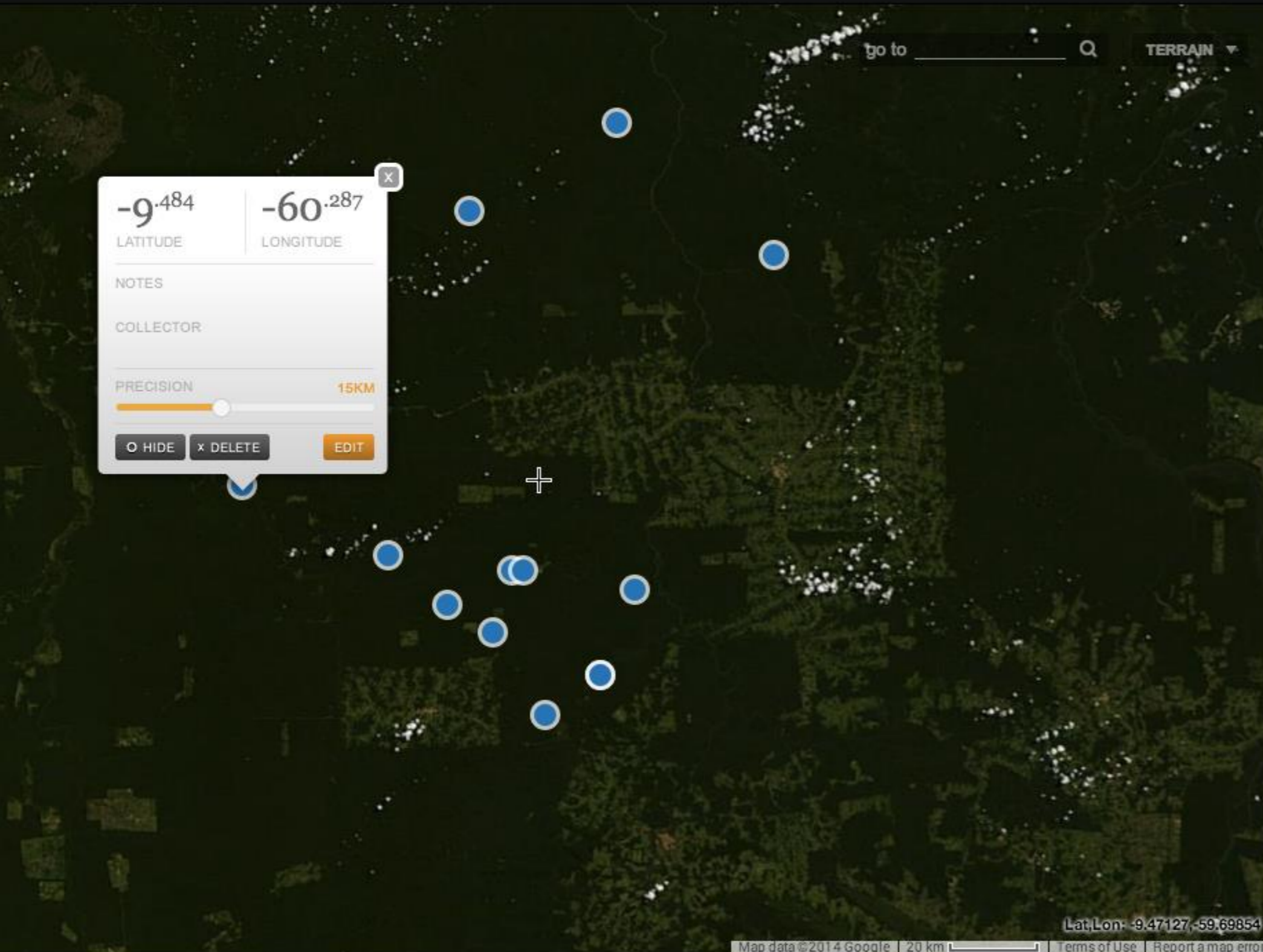
DOWNLOAD DATA

SAVE PROJECT



DOWNLOAD DATA

SAVE PROJECT



ANALYSIS AND SOURCES

X Enables EOO/AOO

2 DATA SOURCES

User ocss 15 user points

Puma concolor 1000 GBIF points

Add a new source

DOWNLOAD DATA

SAVE PROJECT

Add source +

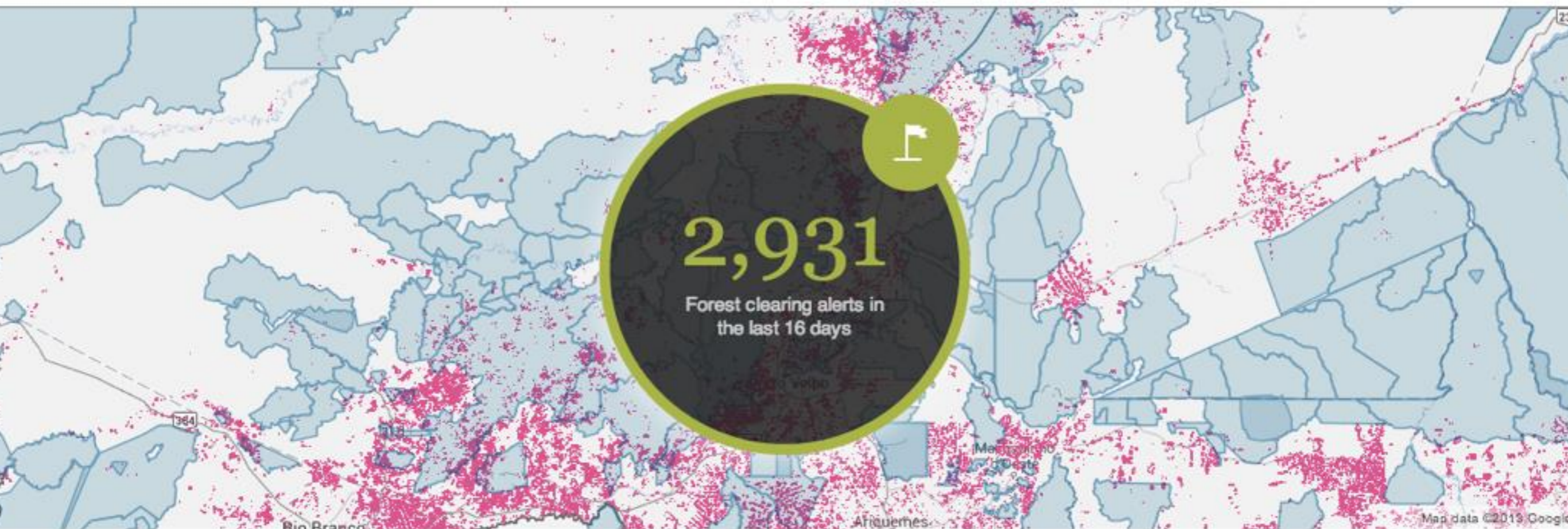
Find out what is happening  
in forests right now

9,657

ALERTS IN THE PAST  
YEAR

3

NEW FOREST  
STORIES



## Join the community

Subscribe to the Global Forest Watch discussion group to stay up to date with the latest news on forest clearing.



## Analysis & alerts

Perform forest clearing analysis on the fly and get your answers in real time, or subscribe to change alerts.



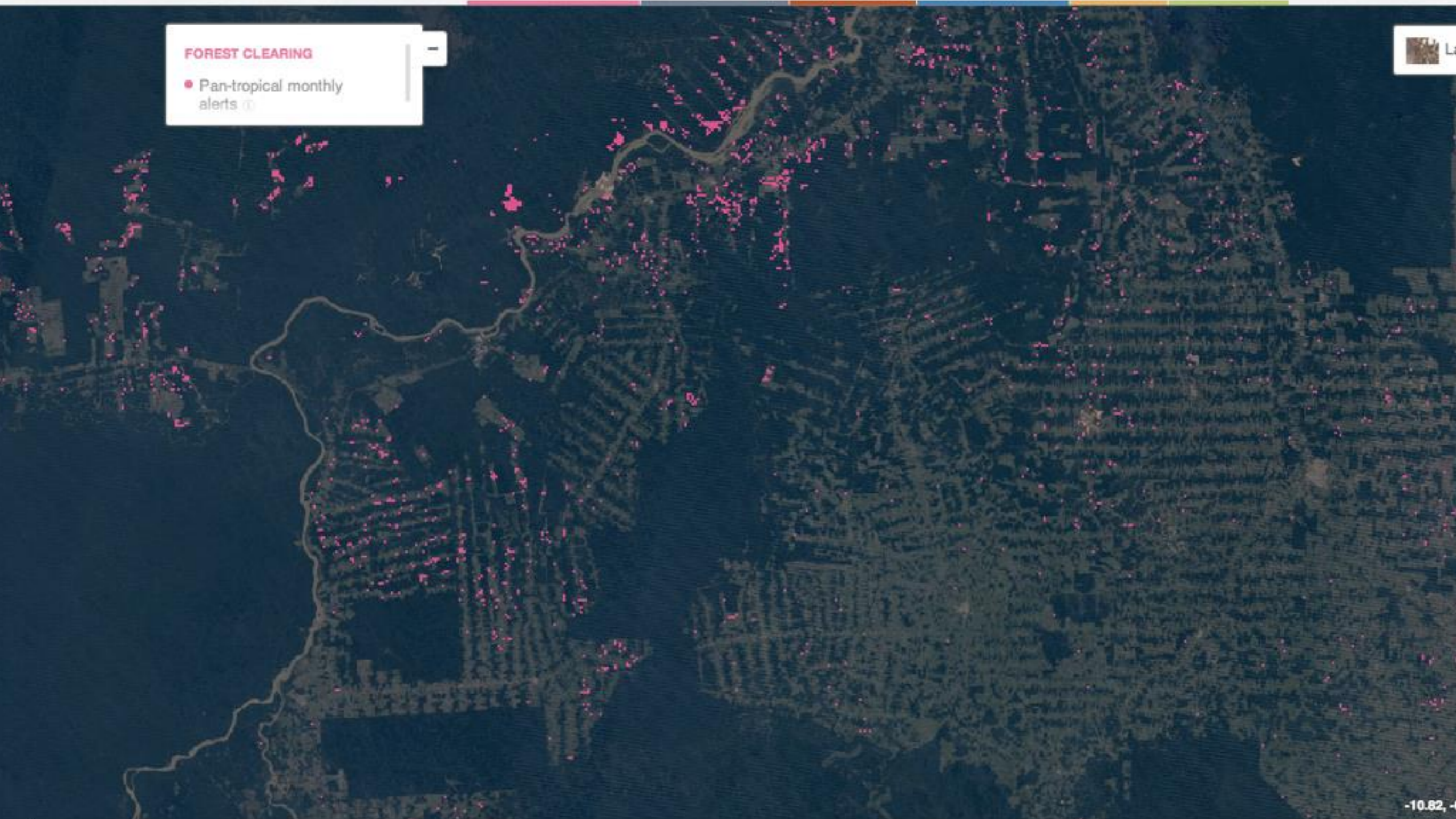
## Submit your story

Participate in detecting forest change. Send your story about forest clearing and we will add it to our collection.



**FOREST CLEARING**

- Pan-tropical monthly alerts [\(1\)](#)



**FOREST CLEARING**

- Pan-tropical monthly alerts



**FOREST CLEARING**

- Pan-tropical monthly alerts



**FOREST CLEARING**

- Pan-tropical monthly alerts [\(1\)](#)



**FOREST CLEARING**

- Pan-tropical monthly alerts



FOREST CLEARING

- Pan-tropical monthly alerts



FOREST CLEARING

- Pan-tropical monthly alerts

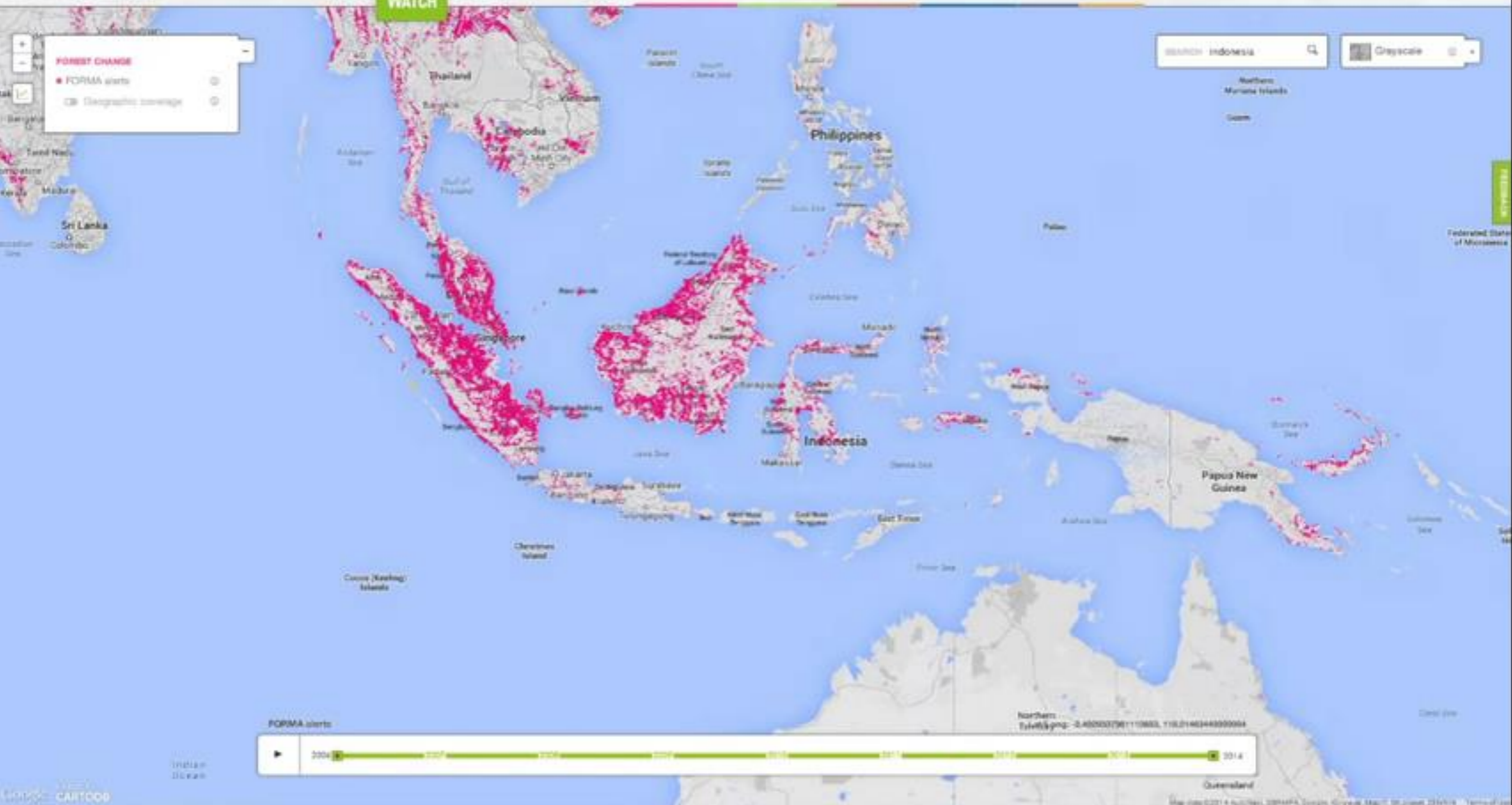


**FOREST CLEARING**

- Pan-tropical monthly alerts

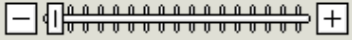






**But, what are the current trends when publishing data products on the Web?**

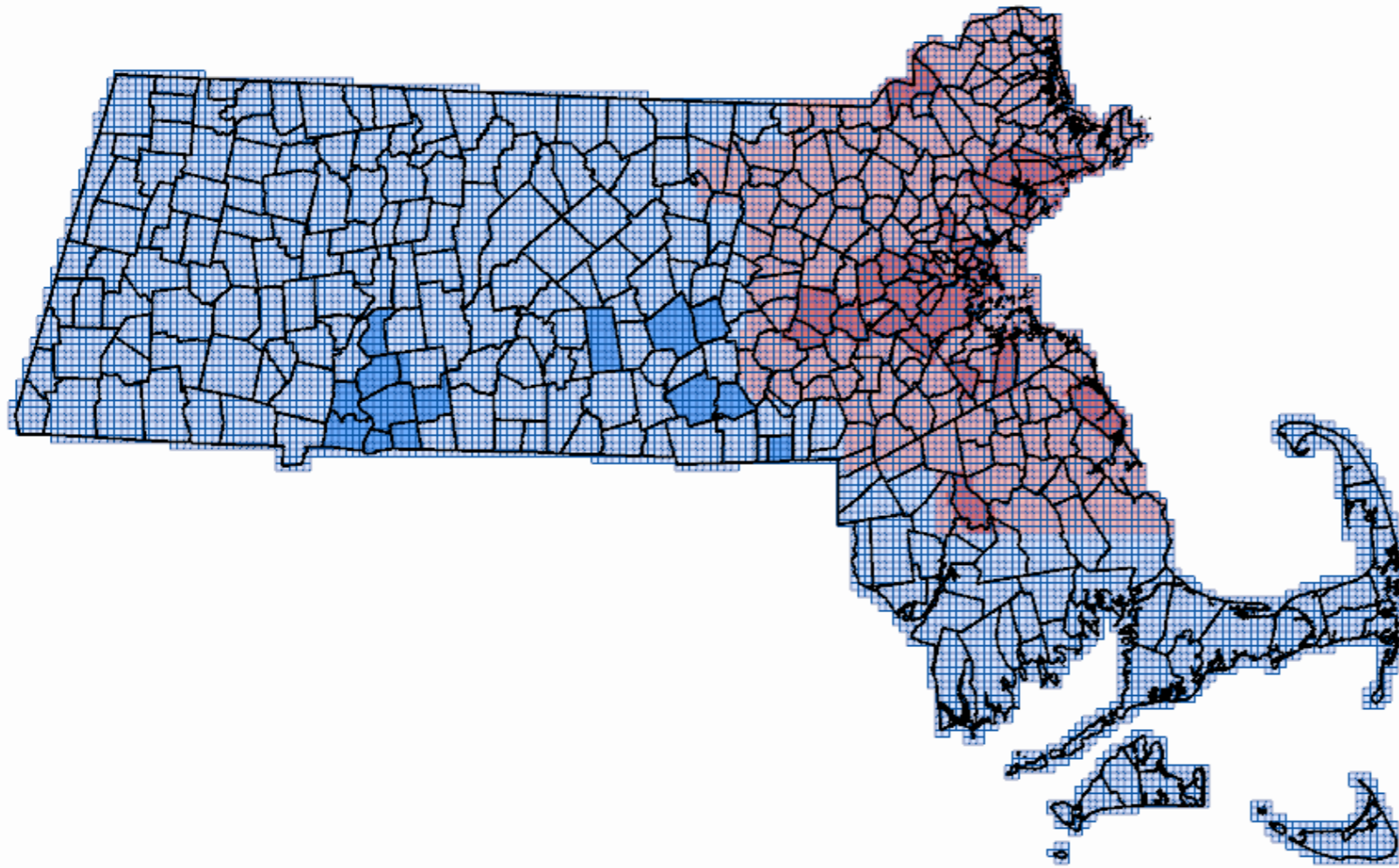
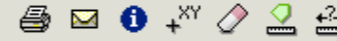
**Data portals**



[Help](#)

[Mobile](#)

Scale 1" = 111607 ft



111607 ft

[More Maps Here -->](#) [Go](#)

4.0.4 (production) AppGeo

[Save Map](#) [as Image](#)

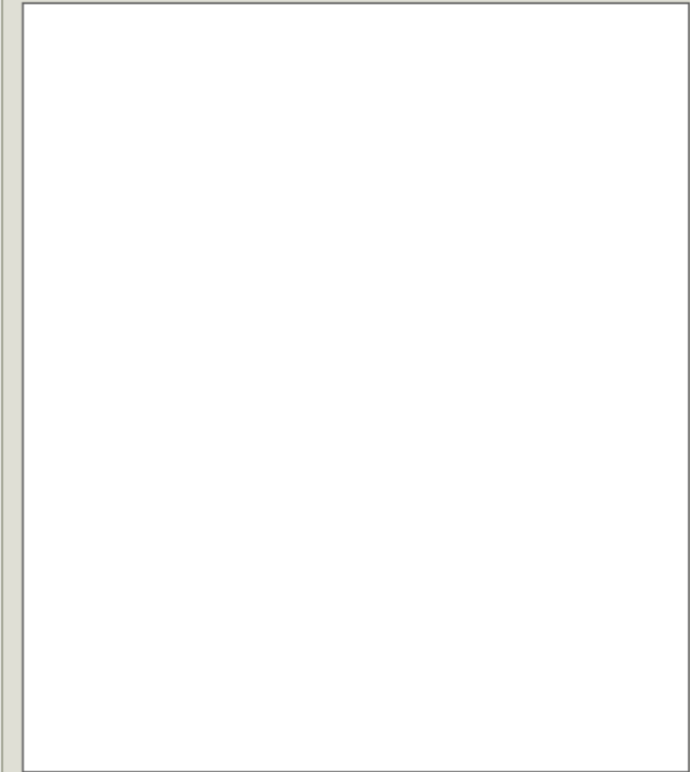
**Selection** **Legend** **Location**

- Find all Orthophoto Tiles
- Touching the Selected Towns
- that have 2008 or 2009 orthophotos available

None selected [To Mailing Labels](#) [To Spreadsheet](#)

**Orthophoto Info**

[Print](#)





### Gazetteer

Please Enter the name of a city, county or state to search for (Case-Insensitive):

Select/Deselect All

- Structure
- Transportation
- Administrative
- Historical
- Community
- Cultural
- Landform
- Hydro Points
- Hydro Lines

**Find Location**

Check to Clear Results

### FEMA Quick Download Tool

Select the desired download option below:

Download the entire viewable area

Download by county

Please zoom in closer. There are too many counties to display.

**Download Data**



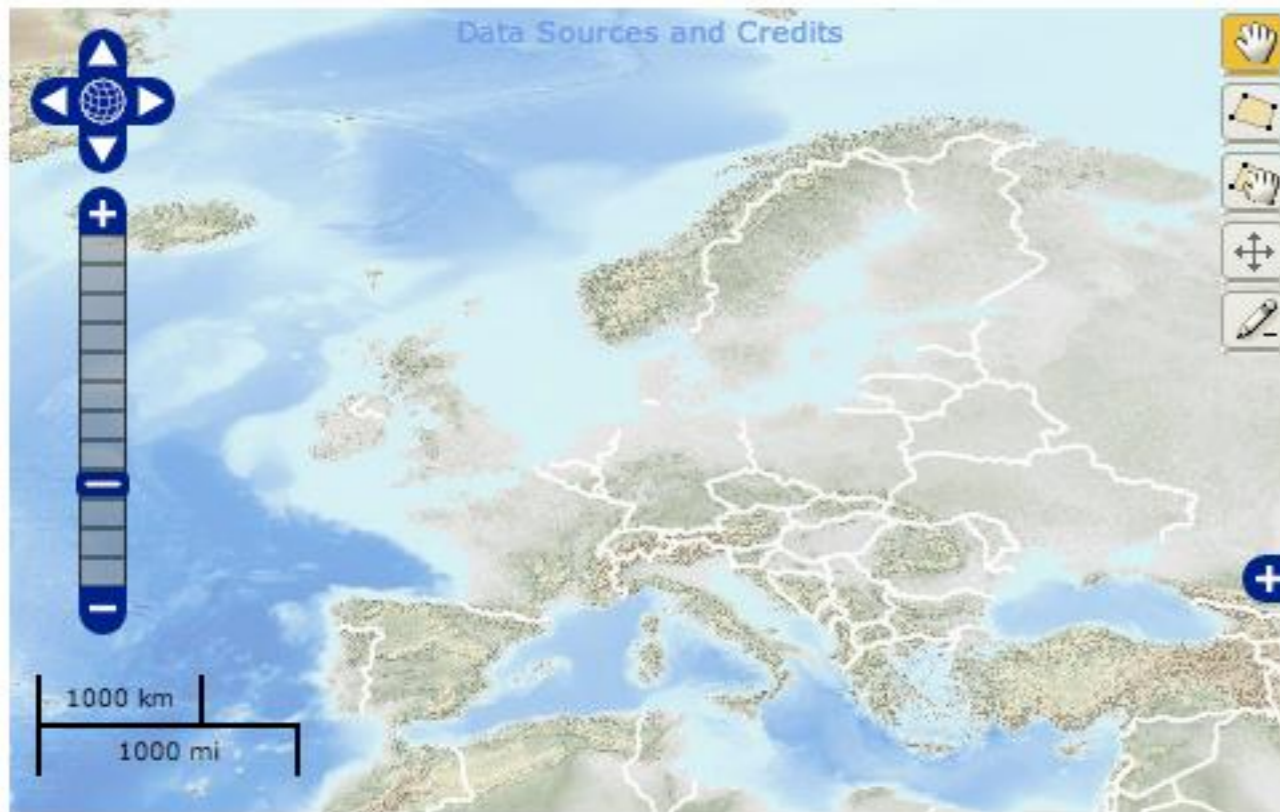
# INSPIRE GEOPORTAL

Enhancing access to European spatial data

[What's new](#)

Find a place in:  Powered by

Search:  [Advanced Search](#)



sorted by   
 displaying  of 175938 results  
 < 1   ...   
 >

**Active Search Criteria**  
 Bounding Box Restrictions

None applied.

**Active Search Filters**

Remove all criteria  
 Poland

**Refine search by**

- ▼ **Origin**
  - Poland (175938)
- ▶ **Metadata Language**
- ▶ **Spatial Data Theme**
- ▶ **Topic Category**
- ▶ **Service Type**

Active Layers: 0

▶ [dataset] Administrative units  
 Административные единицы Administraciniai vienetai  
 адміністрацыйныя адзінкі адміністративні одиниці  
 správnej jednotky správni jednotky Administrative Einheiten  
 Zbiór Jednostki  
 administracyjny powstał w wyniku harmonizacj ...  
[\(show more\)](#)

[dataset] Transport



# INSPIRE GEOPORTAL

Enhancing access to European spatial data

EUROPEAN COMMISSION > INSPIRE > INSPIRE GEOPORTAL > Discovery / Viewer

[What's new](#)

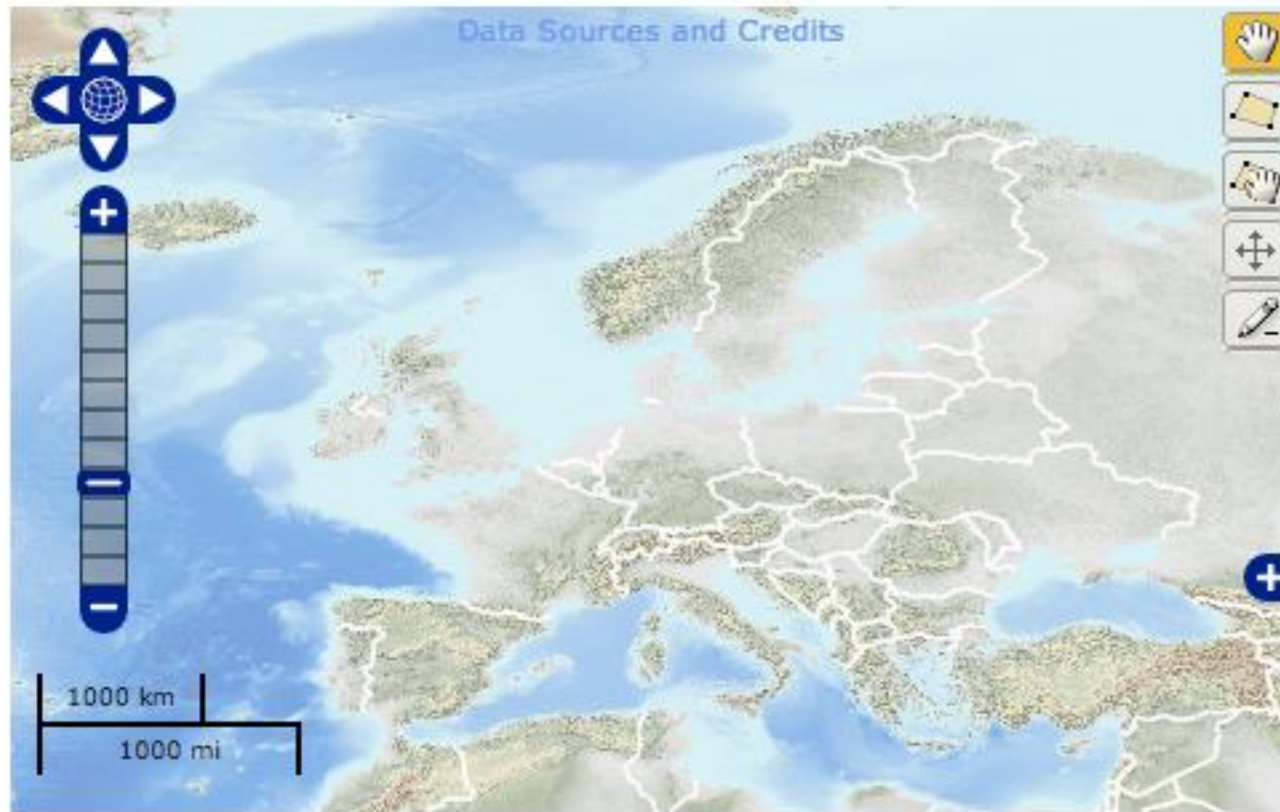
Find a place in:

Powered by

Search:

[Advanced Search](#)

datasets  series  services  layers  download s



Active Layers: 0

- Austria
- Belgium
- Croatia
- Czech Republic
- Denmark
- EU Estonia
- Finland
- France
- Germany
- Greece
- Iceland
- Ireland
- Latvia
- Luxembourg
- Netherlands
- Norway
- Poland**
- Portugal
- EU (92)
- Estonia (38)
- Finland (421)
- France (4724)
- Germany (7323)
- Greece (28)
- Iceland (90)
- Ireland (36)
- Latvia (2812)
- Luxembourg (31)
- Netherlands (134)
- Norway (132)
- Poland (175938)
- Portugal (511)
- Romania (203)
- Slovakia (187)
- Slovenia (52)
- Spain (83334)
- Sweden (229)



# INSPIRE GEOPORTAL

Enhancing access to European spatial data

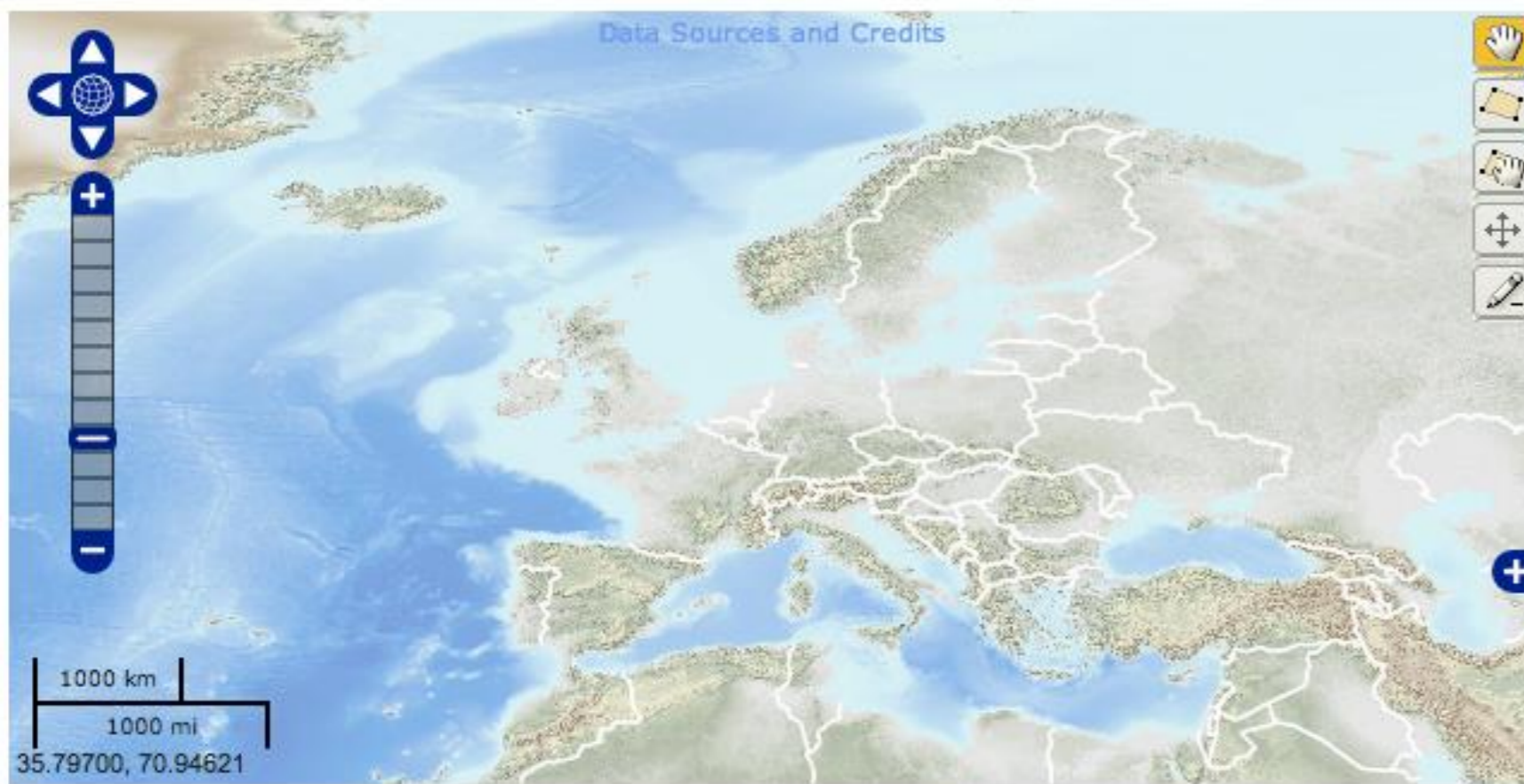
EUROPEAN COMMISSION > INSPIRE > INSPIRE GEOPORTAL > Discovery / Viewer

What's new

Find a place in:

Powered by GeoNames

Search:  [Advanced Search](#)



Active Layers: 0

pl

sorted by

relevance  
displaying  
most relevant

1 to 10  
out of  
175938  
results

< 1  
2 3

...  
17593  
17594

>



[dataset

units

Админист

единицы

Administi

vienetai

адміністр

### Active Search Criteria

Bounding Box Restrictions

None applied.

### Active Search Filters

Remove all criteria

Poland

### Refine search by

▶ Origin

▶ Metadata Language

▶ Spatial Data Theme

▶ Topic Category

▶ Service Type



# INSPIRE GEOPORTAL

Enhancing access to European spatial data

EUROPEAN COMMISSION > INSPIRE > INSPIRE GEOPORTAL > Discovery / Viewer

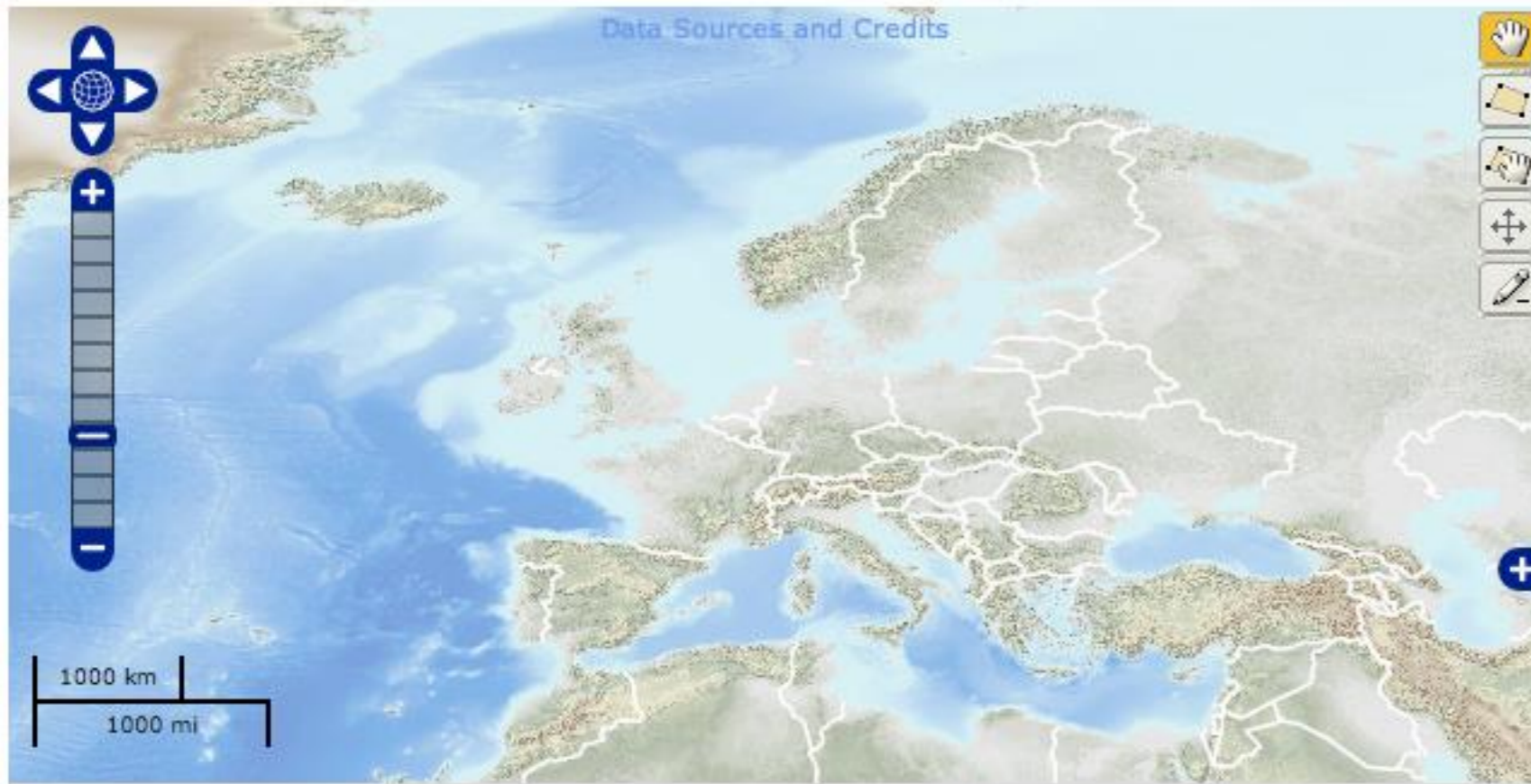
[What's new](#)

Find a place in: Europe ▼

Powered by GeoNames

Search:  [Advanced Search](#)

datasets  series  services  layers



Active Layers: 0

- [Austria](#) [Belgium](#)
- [Croatia](#) [Czech Republic](#)
- [Denmark](#) [EU](#) [Estonia](#)
- [Finland](#) [France](#)
- [Germany](#) [Greece](#)
- [Iceland](#) [Ireland](#) [Latvia](#)
- [Luxembourg](#)
- [Netherlands](#) [Norway](#)
- [Poland](#)** [Portugal](#)
- [Romania](#) [Slovakia](#)
- [Slovenia](#) **[Spain](#)**
- [Sweden](#) [United Kingdom](#)

- [Addresses](#)
- [Administrative Units](#)
- [Agricultural and Aquaculture Facilities](#)
- [Area management/restriction/regulation zones and reporting units](#)
- [Appointed Geodesists](#)



## **The problem**

**No-one is happy because no-one really gets what they want**

**GIS user - Scientists - Decision Makers - General public**

**Data is not really free because is not accessible**

## **So, some ideas**

Show me the data!! Start with direct downloads

Information Design, UX, Designers, Consumer centric design...

# 1:10m Physical Vectors

[Download all 10m physical themes](#) (43.88 MB) version 2.0.0

Files have been downloaded 358,557 times.

*NOTE: Version number indicates the update cycle when that theme was last updated. An older version number indicates updates have not been necessary since then.*

## Coastline



*Includes major islands.*

[Download coastline](#) (2.93 MB) version 3.0.0

[About](#) | [Issues](#) | [Version History](#) »

## Land



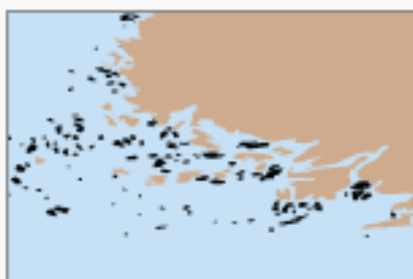
*Land polygons including major islands.*

[Download land](#) (3.26 MB) version 3.0.1

[Download scale rank](#) (3.33 MB) version 3.0.0

[About](#) | [Issues](#) | [Version History](#) »

## Minor Islands



*Islands that are 2 sq. km or less in size.*

[Download minor islands](#) (306.58 KB) version 3.0.0

[Download minor island coastline](#) (301.66 KB) version 3.0.0

[About](#) | [Issues](#) | [Version History](#) »

## Reefs

## Stay up to Date

Know when a new version of Natural Earth is released by subscribing to our announcement list.

## Find a Problem?



Submit suggestions and bug reports via our correction system and track the progress of your edits.

## Join Our Community



Talk back and discuss Natural Earth in the Forums.

## Thank You

Our data downloads are generously hosted by Florida State University.

## Recent Forum Topics

- ⚙️ [Bad ADM1NAME, encoding in version 3.0.0 and missing diacritics in NAME](#)
- ⚙️ [U.S. County Shape File](#)
- ⚙️ [Projection / Proportion / Compatibility?](#)
- ⚙️ [Download URLs – double slash](#)
- ⚙️ [map soft – writer: me](#)
- ⚙️ [Unicode encoding issue – ne\\_10m\\_lakes.dbf](#)
- ⚙️ [How To Create Wind Map?](#)
- ⚙️ [UN map standards](#)
- ⚙️ [What does mapcolor mean in ne\\_10m\\_admin\\_0\\_countries?](#)
- ⚙️ [Ultras Explained](#)



Search

Home

Features

Downloads

Blog

Forums

Corrections

About

## Downloads

Data themes are available in three levels of detail. For each scale, themes are listed on Cultural, Physical, and Raster category pages.

**Stay up to date!** Know when a new version of Natural Earth is released by subscribing to our [announcement list](#).

**Overwhelmed?** The [Natural Earth quick start kit](#) (165 mb) provides a small sample of Natural Earth themes styled in an ArcMap .MXD document and in a QGIS document. Download all vector themes as [SHP/GeoDB](#) (279 mb) or as [SQLite](#) (222 mb).

Natural Earth is the creation of many [volunteers](#) and is supported by [NACIS](#). It is free for use in any type of project. [Full Terms of Use »](#)

### Large scale data, 1:10m



[Cultural](#) [Physical](#) [Raster](#)

The most detailed. Suitable for making zoomed-in maps of countries and regions. Show the world on a large wall poster.

**1:10,000,000**  
**1" = 158 miles**  
**1 cm = 100 km**

### Medium scale data, 1:50m

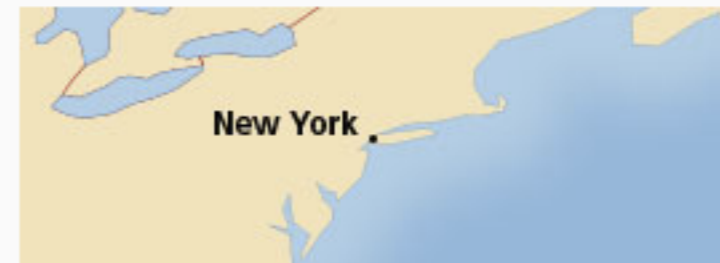


[Cultural](#) [Physical](#) [Raster](#)

Suitable for making zoomed-out maps of countries and regions. Show the world on a tabloid size page.

**1:50,000,000**  
**1" = 790 miles**  
**1 cm = 500 km**

### Small scale data, 1:110m



[Cultural](#) [Physical](#)

Suitable for schematic maps of the world on a postcard or as a small locator globe.

**1:110,000,000**  
**1" = 1,736 miles**  
**1 cm = 1,100 km**



## Layers by Data Category

[Using this layer list ...](#)

Jump to a category:

### Administrative and Political Boundaries

Layer Name	More Info/ Status Map	Download from Data Discovery Tool	FTP	Request Media
New Hampshire Congressional District Boundaries - 2012				
New Hampshire Executive Council District Boundaries 2012				
New Hampshire House of Representatives Floterial District Boundaries 2012				
New Hampshire Political Boundaries at 1:24,000 Scale				
New Hampshire Senate District Boundaries 2012				
Statistical Census Boundaries		N/A		
USGS 15-Minute Quadrangle Boundaries				
USGS 7.5-Minute Quadrangle Boundaries				

### Agriculture and Farming

Layer Name	More Info/ Status Map	Download from Data Discovery Tool	FTP	Request Media
Pesticides - Agricultural		N/A		

### Biology and Ecology

Layer Name	More Info/ Status Map	Download from Data Discovery Tool	FTP	Request Media
Freshwater Fisheries in NH - Presence by Town				
Freshwater Fisheries in NH - Presence by Watershed				
Great Bay Estuary Eelgrass				

Search GRANIT

#### QUICK LINKS

Search Database using  
Data Discovery Tool

Layer List:  
Alphabetical Order

Layer List:  
Data Category

Tax Parcel Information

GRANIT Data Questions?

Login

Contact Us

#### GIS Event Calendar

##### June

1	2	3	4	5	6	7
8	9	10	11	12	13	14
15	16	17	18	19	20	21
22	23	24	25	26	27	28
29	30					

**Sometimes is too much data!**

Using Sentinel 1

Is gonna be pricey if things are not made more accessible



## Search



[advanced search](#)

Request done : ( footprint:"Intersects(POLYGON((-167.58919433594 -46.987053712584,11.410805664060007 -46.987053712584,11.410805664060007 82.686211271326,-'

Display 1 to 7 of 7 products

- S1A\_IW\_GRDH\_1SDH\_20140502T170314\_20140502T170343\_000421\_0004CC\_F069  
[https://senthub.esa.int/odata/product\(219\)/](https://senthub.esa.int/odata/product(219)/)  
 Date : 2014-05-02T17:03:14.083Z, Instrument : SAR-C, Mode : IW, Satellite : Sentinel-1, Size : 1 GB
- S1A\_IW\_SLC\_\_1SDH\_20140502T170314\_20140502T170344\_000421\_0004CC\_1A90



**But raw data is also not accessible to decision makers**

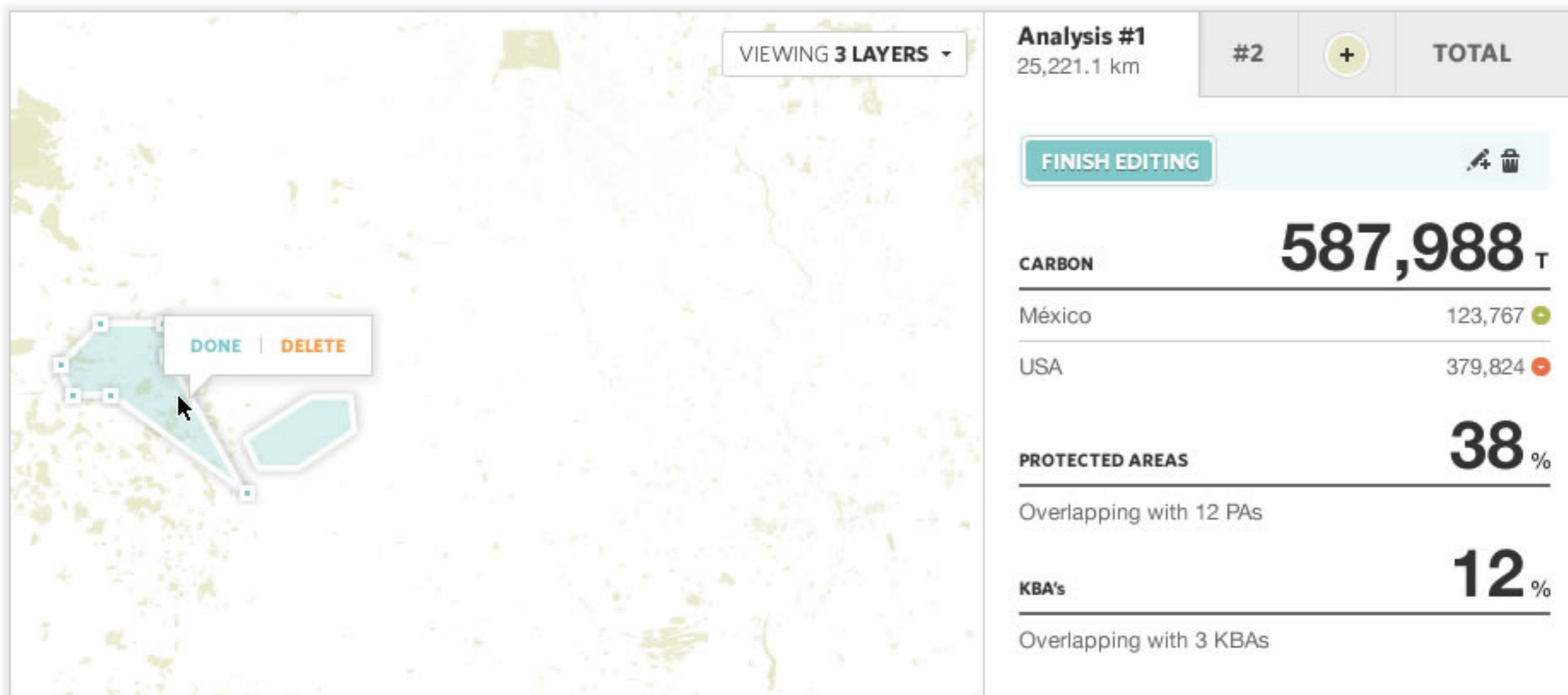
Build Web apps for Data Products

But do it thinking about the context and **focussed** use case



# Estimate the potential contribution of any area in the world to climate change mitigation

a joint product of The CBD Secretariat, LifeWeb and UNEP-WCMC





3 LAYERS

PG #1

25,221.1 km

#2

+

TOTAL

**WELCOME TO THE CARBON CALCULATOR TOOL**

Draw polygons around your area of interest (AOI) to get an initial estimate about the potential contribution of this area to climate change mitigation and get information on its conservation values and forest status.

**CREATE AN AOI**

Edit this polygon



CARBON

**587,988** T

México

123,767

USA

379,824

PROTECTED AREAS

**38** %

Overlapping with 12 PAs



# CARBON CALCULATOR

a joint product of The CBD Secretariat, LifeWeb and UNEP-WCMC

ABOUT

SHARE THIS REPORT



AOI #1

3017182 km<sup>2</sup>



SUMMARY

LOADING REQUEST

CARBON **3,554,790,542 T**

Mexico 3,554,790,542 T

C. SEQ. **149,875,309 T**

COVERED BY PAs **10%**

Overlapping with 70 Protected Area(s)

COVERED BY KBAs **0%**

Overlapping with 0 Key Biodiversity Area(s)

CONSERVATION PRIORITIES

MEXICO			
VERY-HIGH	HIGH	MEDIUM	OUT
1%	19%	11%	69%

**CARBON CALCULATOR**

a joint product of The CBD Secretariat, LifeWeb and UNEP-WCMC

ABOUT

SHARE THIS REPORT



#1

**AOI #2**

34413 km<sup>2</sup>

+

SUMMARY

1 polygons. [Add another?](#)



CARBON

**52,405,233 T**

Mexico

52,405,233 T

C. SEQUESTRATION

**0 T**

COVERED BY PAs

**100 %**

Overlapping with 2 Protected Area(s)

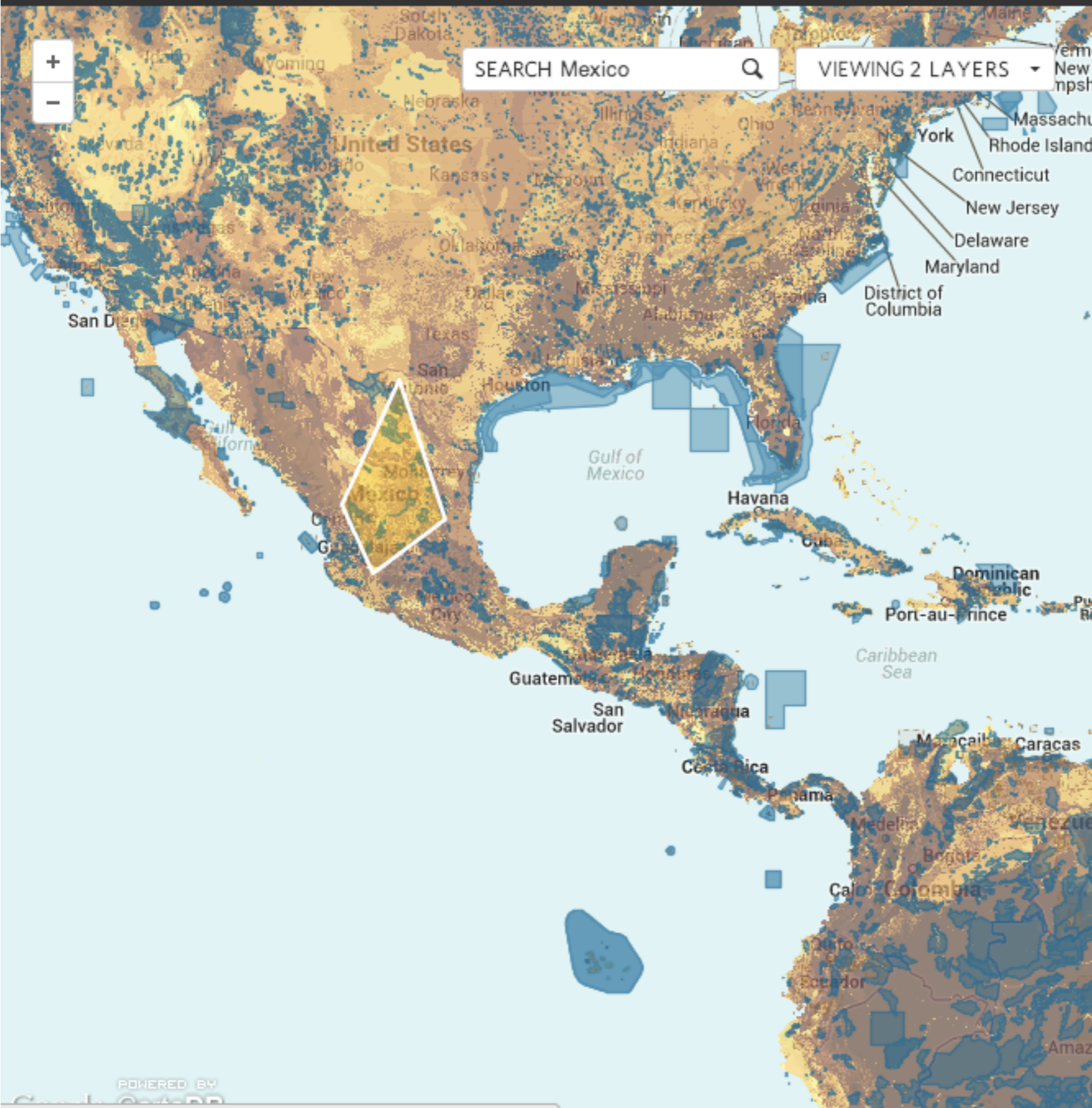
COVERED BY KBAs

**0 %**

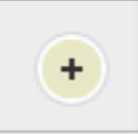
Overlapping with 0 Key Biodiversity Area(s)

CONSERVATION PRIORITIES

MEXICO			
VERY-HIGH	HIGH	MEDIUM	OUT
0%	0%	50%	50%



#1



AOIs SUMMARY  
3017182 km<sup>2</sup> in total

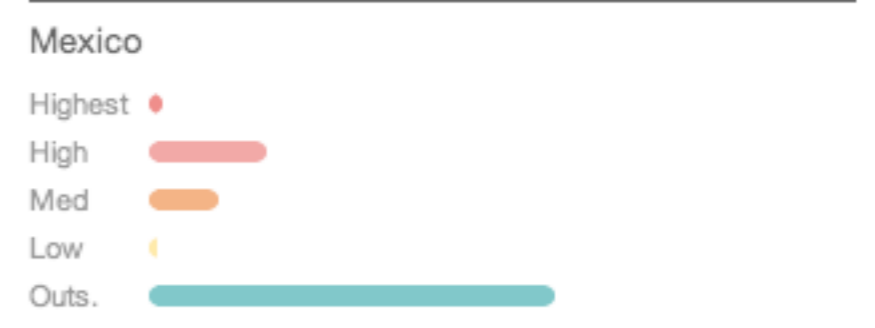
CARBON **3,554,790,542 T**



COVERAGE STATISTICS



CONSERVATION PRIORITIES



# Summarizing

Think about the end product, the use case, why we are doing all this

Likely the same app/portal will NOT work for all stakeholders

Look for Data Products as a Service

Some other examples

“Georgina .....sits down, drinks her tea.... opens skydipper.... scans important information about the PAs she is managing....

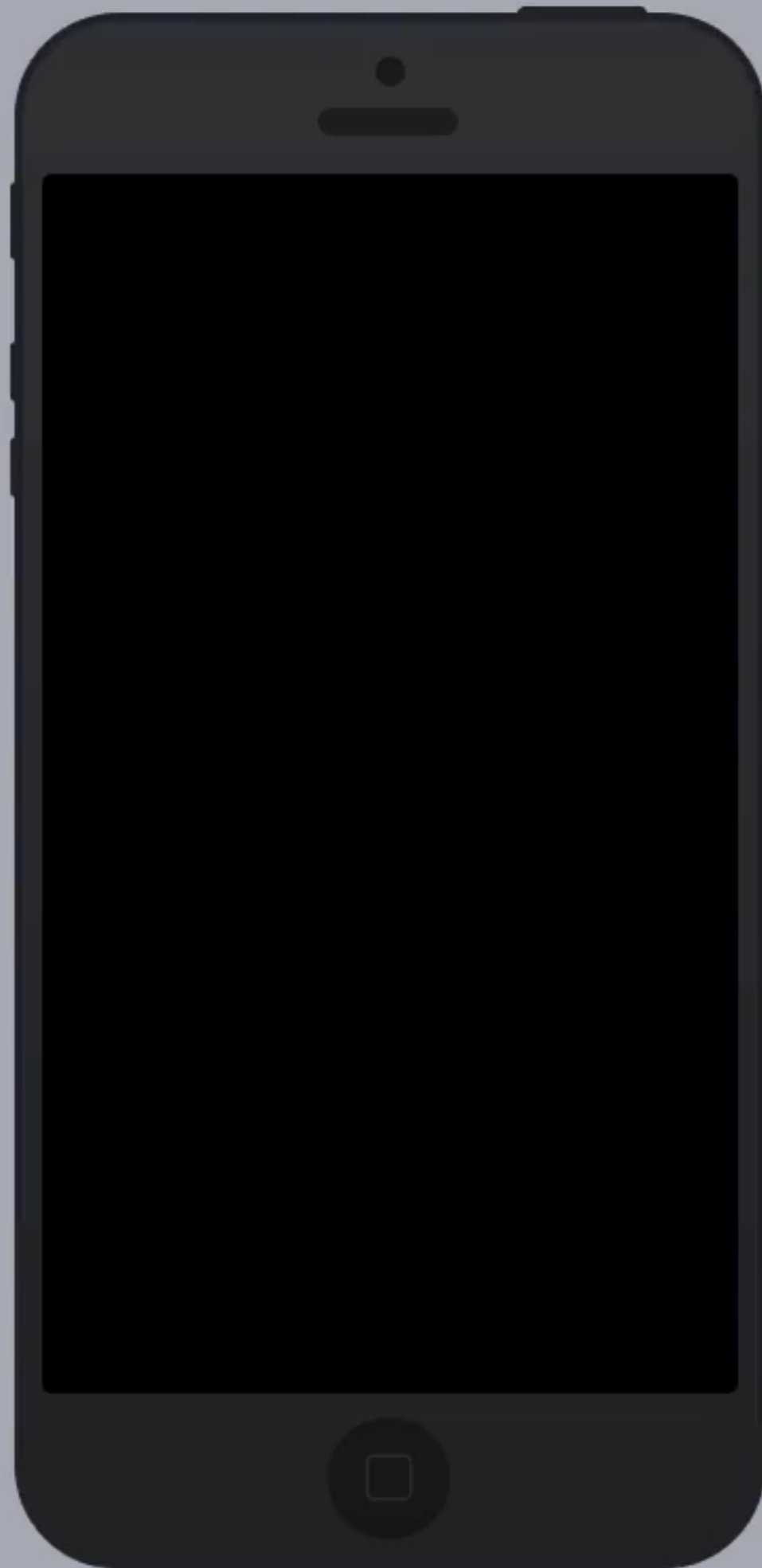
**What she sees, guides her day.”**



Mobile first

Consume information while drinking  
coffee.

We don't want to give people any \*more\*  
work to do.



Hello Craig Mills,  
35 new events in your 12 parks

Search



LATEST EVENTS



New satellite photo  
of this park available.  
Taken last Thursday 24th November

MARK AS READ



3 New photos  
Apocobamba National Park

SHARE PHOTO

MARK AS READ



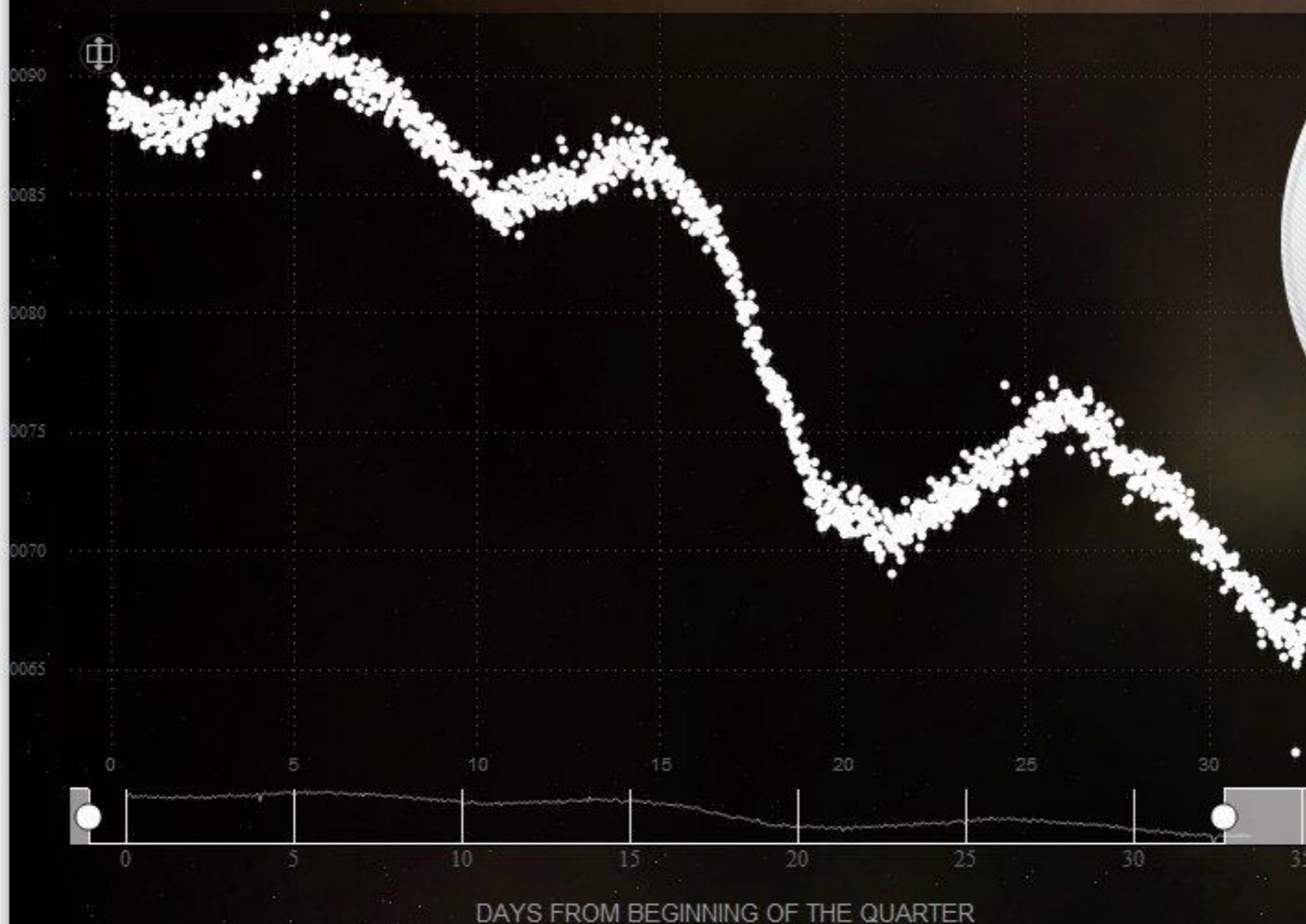
13 Articles  
mentioning your park  
Since Yesterday: -7% vs LAST WEEK

VIEW LIST

MARK AS READ



When we made planet hunters and  
oldweather, it was made for the classifiers.



HELP RESTART

Are there any big breaks or gaps in the light curve?

YES NO

Type of star: Dwarf  
Apparent visual magnitude: 11.7  
Temperature: 5801 (K)  
Radius: 1.4x Sol

★ MARK AS FAVORITE



## HMS Empress of Britain

Active: Cape Verde Islands

55% COMPLETE

ElisabethB is the Captain and 136 volunteers are following this vessel

[Jump Aboard](#)

Google

Datos de mapa ©2011 Google

# Old Weather: Our Weather's Past, the Climate's Future

## Introduction

Help scientists recover worldwide weather observations made by Royal Navy ships around the time of World War I. These transcriptions will contribute to climate model projections and improve a database of weather extremes. Historians will use your work to track past ship movements and the stories of the people on board.

## Project Statistics

Old Weather transcriptions so far

**48%** OF THE LOGS COMPLETED

